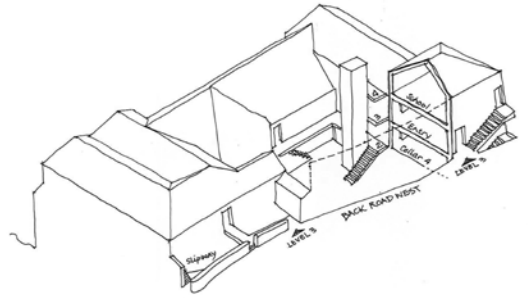


Porthmeor artists' studios

project	Porthmeor artists' studios renovation and alteration
location	St Ives, Cornwall
client	Borlase Smart John Wells Trust
dates	2006 - present
cost	£3 million (approximate)
area	



The project, on Porthmeor Beach near to the Tate St Ives, includes the repair and restoration of the well-known historic artists' studios and School of Painting, as well as fishermen's cellars.



It is a Grade II listed building. Improvements involve adding acoustic, fire, and thermal insulation, all respecting its architectural character and its status as a listed building; the provision of disabled access to public areas and studios where possible; the creation of more studios; the rationalization of the space used by the St Ives School of Painting; the reconfiguration of the street level space to make it more inviting to the public, giving them some insight into the work of the artists and the school, and allowing them a privileged view of the beach; the preservation of the fishermen's cellars and the courtyard.



The project has been submitted for planning and listed building approval. Stage 1 of the project has been funded by the Arts Council England. Further funding applications will follow.

